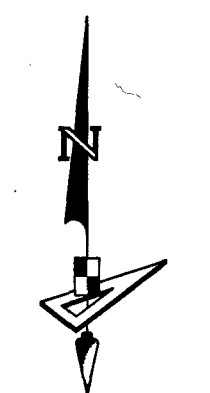


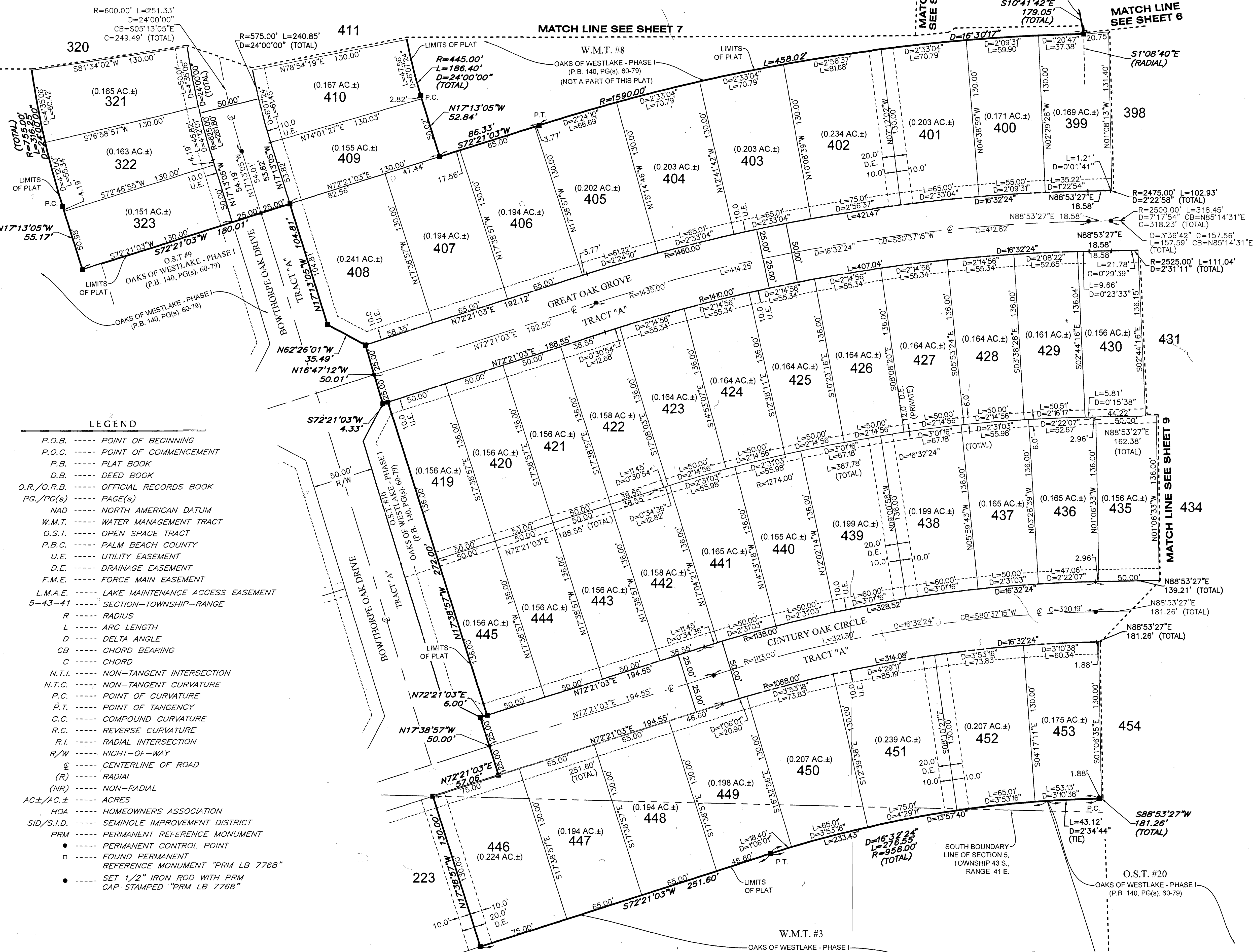
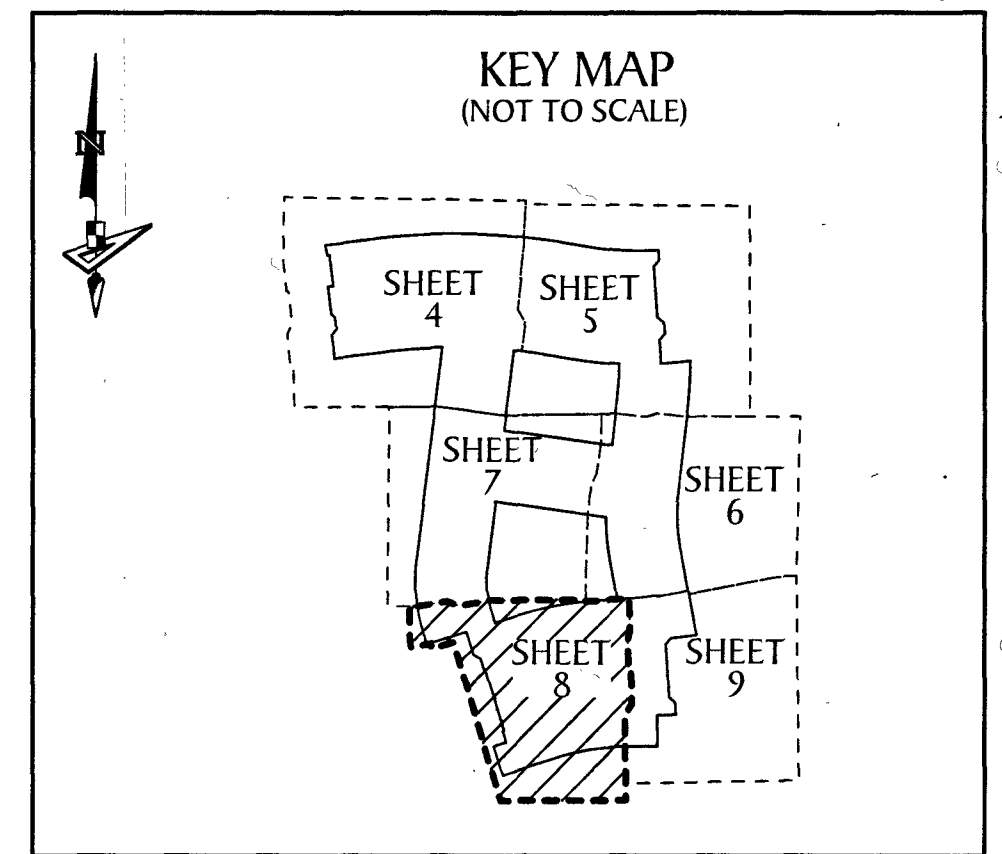
OAKS OF WESTLAKE - PHASE II

A SUBDIVISION IN SECTIONS 5 AND 8, TOWNSHIP 43 SOUTH, RANGE 41 EAST, CITY OF WESTLAKE, PALM BEACH COUNTY, FLORIDA, BEING A REPLAT OF A PORTION OF TRACT "U", OAKS OF WESTLAKE - PHASE I, PLAT BOOK 140, PAGES 60 - 79, INCLUSIVE, PUBLIC RECORDS OF PALM BEACH COUNTY, FLORIDA.

87



SCALE 1" = 40'
0 20 40 80
SEE NOTE ON SHEET 2 FOR BASIS OF BEARINGS



- LEGEND**
- P.O.B. ----- POINT OF BEGINNING
 - P.O.C. ----- POINT OF COMMENCEMENT
 - P.B. ----- PLAT BOOK
 - D.B. ----- DEED BOOK
 - O.R./O.R.B. ----- OFFICIAL RECORDS BOOK
 - PG./PG(s) ----- PAGE(s)
 - NAD ----- NORTH AMERICAN DATUM
 - W.M.T. ----- WATER MANAGEMENT TRACT
 - O.S.T. ----- OPEN SPACE TRACT
 - P.B.C. ----- PALM BEACH COUNTY
 - U.E. ----- UTILITY EASEMENT
 - D.E. ----- DRAINAGE EASEMENT
 - F.M.E. ----- FORCE MAIN EASEMENT
 - L.M.A.E. ----- LAKE MAINTENANCE ACCESS EASEMENT
 - 5-43-41 ----- SECTION-TOWNSHIP-RANGE
 - R ----- RADIUS
 - L ----- ARC LENGTH
 - D ----- DELTA ANGLE
 - CB ----- CHORD BEARING
 - C ----- CHORD
 - N.T.I. ----- NON-TANGENT INTERSECTION
 - N.T.C. ----- NON-TANGENT CURVATURE
 - P.C. ----- POINT OF CURVATURE
 - P.T. ----- POINT OF TANGENCY
 - C.C. ----- COMPOUND CURVATURE
 - R.C. ----- REVERSE CURVATURE
 - R.I. ----- RADIAL INTERSECTION
 - R/W ----- RIGHT-OF-WAY
 - ⊕ ----- CENTERLINE OF ROAD
 - (R) ----- RADIAL
 - (NR) ----- NON-RADIAL
 - AC±/AC.± ----- ACRES
 - HOA ----- HOMEOWNERS ASSOCIATION
 - SID/S.I.D. ----- SEMINOLE IMPROVEMENT DISTRICT
 - PRM ----- PERMANENT REFERENCE MONUMENT
 - ----- PERMANENT CONTROL POINT
 - ----- FOUND PERMANENT REFERENCE MONUMENT "PRM LB 7768"
 - ----- SET 1/2" IRON ROD WITH PRM CAP, STAMPED "PRM LB 7768"

NOTE:
ALL LINES THAT INTERSECT A CURVE THAT ARE NOT LABELED NON-RADIAL (NR) ARE RADIAL.



1720 East Tiffany Drive
Suite 201
Mangonia Park, FL 33407
Phone: (561) 444-2720
www.geopointsurvey.com
Licensed Business Number LB 7768